

# Anthropomorphic Abdomen Phantom

**The Abdomen Phantom is suitable to use as an anthropomorphic surrounding for several standard imaging inserts for investigation of the influence of scan parameters in CT.**

QRM-Abdomen comprises a spine insert, and shell of soft tissue equivalent material. It is available as well with fixed liver and spleen inserts providing the appropriate CT values of real tissue.

The plastics used in this anthropomorphic phantom mimic human tissues in the thorax with respect to density and X-ray attenuation characteristics of a human abdomen.

It consists of a standard bore hole with diameter of 100 mm. Multiple standard cylinders for image quality purposes are available. Please have a look at the product section: „Image Quality and Dose“ at [www.qrm.de](http://www.qrm.de).

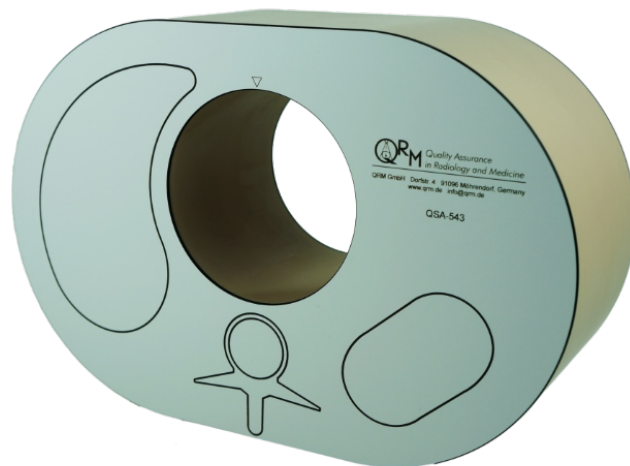
The QRM-Abdomen is also available with drilled holes according to CTDI-specifications for dosimetry purpose.

## Specifications

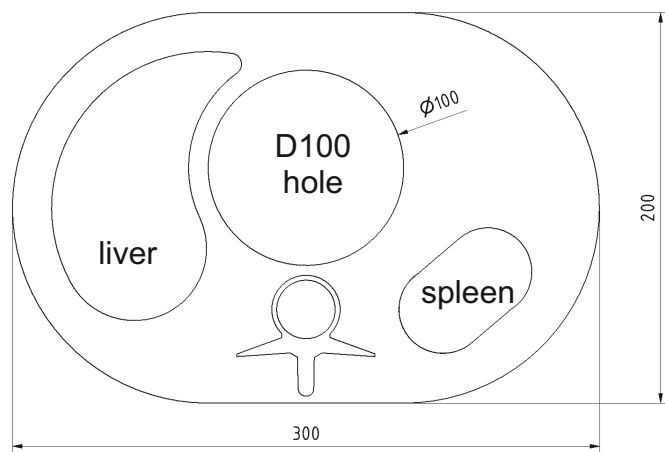
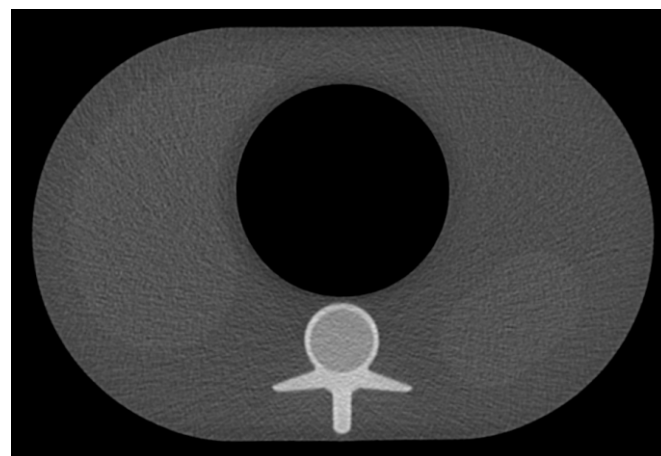
Phantom weight (total) ..... 3200 g  
Dimensions ..... 200 x 300 mm  
Diameter of bore hole ..... 100 mm  
Height of phantom ..... 100 mm

Base material ..... soft tissue equivalent  
(app. 35 HU @ 120 kV)  
Liver/Spleen ..... tissue equivalent resin  
(app. 55 HU @ 120 kV)  
Spine ..... bone like (corticalis/spongiosa)

Extension Rings (e.g. Fat Rings) are available upon request!



QRM-Abdomen



Sketch of the complete anthropomorphic QRM-Abdomen (height 100 mm)