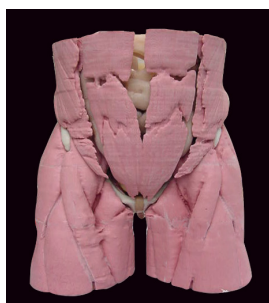


Virtual Human Male Pelvis Phantom

Model 801-P



THE NEXT GENERATION IN ANTHROPOMORPHIC PHANTOMS

The CIRS Model 801-P phantom is our most realistic, tissue equivalent phantom available. The phantom was designed for use in diagnostic radiology and radiation therapy for imaging dosimetry teaching and demonstration applications. All anatomical dimensions of the phantom are based on The Visible Human Project (VHP) data sets that serve as a reference for the study of human anatomy and are available through the National Library of Medicine.

CIRS has combined this anatomical detail with our advanced tissue mimicking technology. The phantom is made from proprietary epoxy materials that mimic the density and radiation attenuation properties of human tissue within 1% from 50 keV to 25 MeV. It contains anatomically precise bone, cartilage, spinal cord, vertebral disks, muscle, intestines, bladder, prostate, rectum and interstitial fat.

Just like the CIRS ATOM® line of phantoms, the VHP Phantom can be purchased uncut or segmented into 25mm thick contiguous sections. CIRS offers a hole grid options of 3 cm x 3 cm.

The grid contains 5mm diameter through holes filled with homogeneous tissue equivalent plugs for TLD placement. Hole locations are optimized for internal organ dosimetry. Ion chamber cavities, other grid patterns and hole diameters are available upon request.

Features

- Based on the Visible Human Project data set
- Superior tissue simulation and lifelike imaging properties
- Accommodates wide variety of detectors

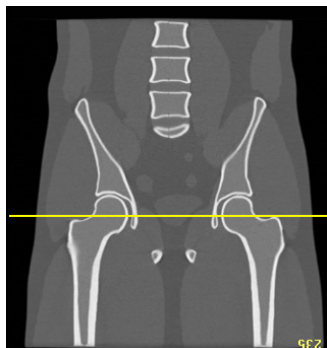
深圳市净康科技有限公司

王小姐 15813841944 / 0755-28917660

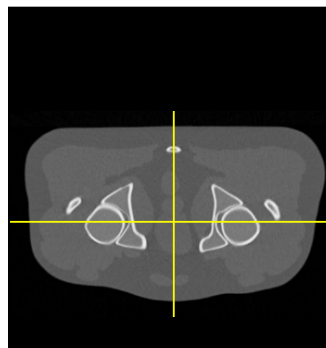
www.3000buy.com

CIRS

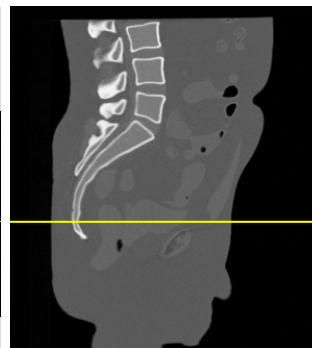
Tissue Simulation & Phantom Technology



Mid Coronal CT



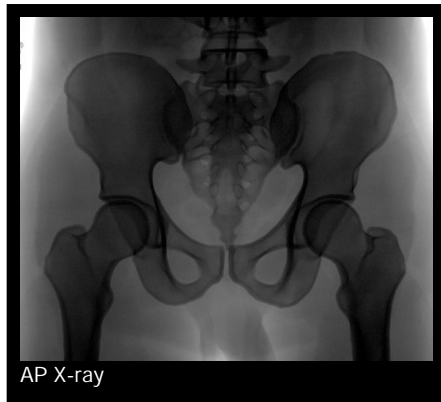
Mid Axial CT



Mid Sagittal CT



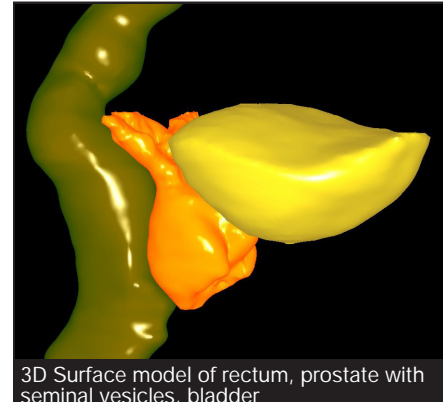
AP Scout



AP X-ray



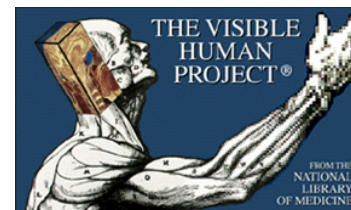
X-ray of femoral head & socket



3D Surface model of rectum, prostate with seminal vesicles, bladder



* 801-P-F Custom Slicing to show Internal Anatomy



SPECIFICATIONS

OVERALL DIMENSIONS:	35.6 cm x 30.5 cm x 25.4 cm (14" x 12" x 10")
PHANTOM WEIGHT:	24.9 kg (55 lb)
MATERIALS:	Epoxy Resin

MODEL 801-P OPTIONS

MODEL NO.	DESCRIPTION
801-P-A	Virtual Human Male Pelvis Phantom - Sectional without holes
801-P-B	Virtual Human Male Pelvis Phantom - Sectional with Ø 5 mm holes in a 3x3 cm grid spacing
801-P-F	Virtual Human Male Pelvis Phantom - Non-sectioned without holes

© 2013 Computerized Imaging Reference Systems, Inc. All rights reserved.
Specifications subject to change without notice.
Publication: 801-P DS 072220

MODEL 801-P INCLUDES

QTY	DESCRIPTION
1	Virtual Human Male Pelvis Phantom
1	Carry Case
-	60 Month Warranty

*Custom Slicing is available upon request.



Computerized Imaging Reference Systems, Inc. has been certified by UL DQS Inc. to (ISO) 13485:2016. Certificate Registration No. 10000905-MP2016.