

# Vascular Access Training Phantom

Model 072



## *DEVELOP SKILLS FOR ULTRASOUND GUIDED INJECTION AND VENIPUNCTURE TECHNIQUES IN A NON-STRESSFUL ENVIRONMENT*

The CIRS Vascular Access Training Phantom is designed to provide a realistic training medium for needle insertion. The phantom is made from a durable elastomeric compound mimicking the tactile feel and puncture resistance of soft tissue. This material has realistic acoustic properties allowing imaging of the simulated vessels under ultrasound. The vessels can be accessed from top and bottom surfaces and can be easily replenished using a syringe.

The phantom requires no special handling and will not dry out. The phantom also includes start up accessories.

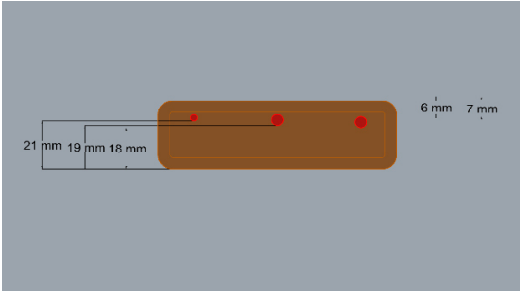
***“Dynamic and static US guidance during central venous catheter insertion was associated with improved in-hospital first cannulation rates and overall success rates of insertions by junior residents.”***

Dodge, Kelly L., et al.  
“Use of Ultrasound Guidance Improves Central Venous...”  
*Journal of Ultrasound in Medicine*

### Features

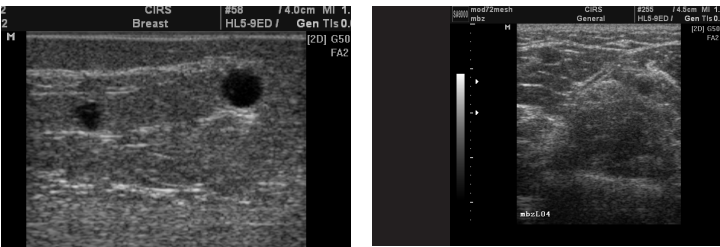
- Teach ultrasound scan techniques
- Demonstrate and practice various insertion techniques
- Experiment with new procedures and evaluate new devices
- Teach vein recognition through palpation

MODEL 072



Includes 3 mm vessel and 5 mm vessel (straight)  
Middle 5 mm vessel bifurcation

DIMENSIONS	100 mm x 175 mm x 30 mm
PHANTOM WEIGHT	2 lbs. (0.7 kg)



FEATURES
Z-Skin™ enables self-healing
Develop hand-eye coordination in non-stressful environment
Provides realistic training medium for needle insertion
Varied vessel shapes including bifurcation

MODELS 072 INCLUDES	QTY
Vascular Access Training Phantom	1
Bottle Simulated Blood (125 ml)	1
Surface Conditioner (powder)	1
Syringe	1
Needle	1
Carry Case	1
User Guide	1
12 Month Warranty*	1

\*Please note: once any device has been inserted into the phantom (such as biopsy needles, localization wires, etc.) the 12 month warranty will not cover claims related to material desiccation or needle tracking.

