

# Prostate Training Phantom

Model 070L



## THE IDEAL TRAINING DEVICE FOR IMAGE-GUIDED PROCEDURES

The Model 070L is a realistic and durable prostate training phantom for both diagnostic and interventional procedures.

Enhanced realism has been achieved with a Zerdine® gel formulation that better simulates the ultrasound contrast between the prostate and background tissue. The gel formulations provide CT, MR and elastography contrast for multi-modality imaging. CIRS' proprietary Z-Skin™ formulation more accurately simulates the rectal wall, providing a more realistic scanning environment.

Z-Skin™ provides perineal access for interventional procedures, and closes up on itself after it is punctured so that the Zerdine® gel inside the phantom is not exposed to air during scanning. Minimal air exposure better protects the gel from drying out, thus increasing the phantom's useful life. In addition, Z-Skin is extremely stretchable and will protect the gel inside the phantom from tearing when the rectal probe is manipulated at severe angles. The phantom accommodates both end-fire and side-fire ultrasound transducers. Zerdine®

is specially formulated to minimize tearing when punctured, providing a self-healing capability that dramatically extends the life of the phantom during interventional procedures.

The phantom contains embedded lesions. For users interested in image fusion studies, the phantom can be purchased as a kit to include a serial-number specific CT DICOM Data set for reference.

### Features

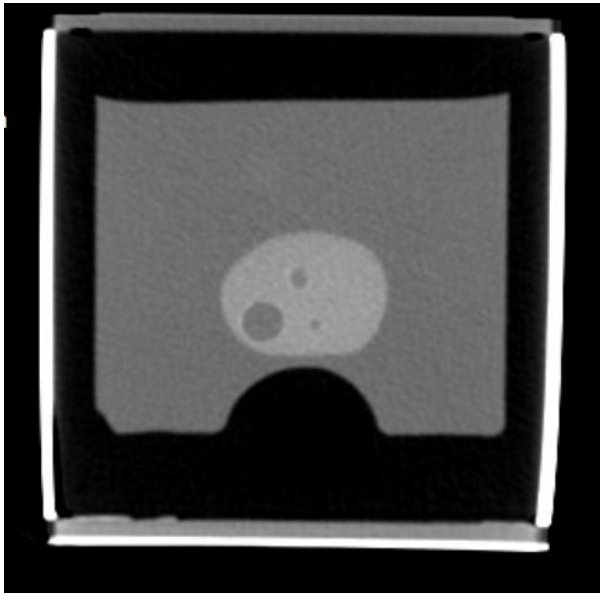
- Includes bladder rectal wall, perineal membrane and urethra plus digitally modeled prostate gland and seminal vesicles.
- Phantom contains lesions
- Train for ultrasound-guided seed implantation, cryosurgery and needle biopsy in one phantom

900 Asbury Ave • Norfolk, Virginia 23513 • USA  
Tel: 800.617.1177 • 757.855.2765 • Fax: 757.857.0523

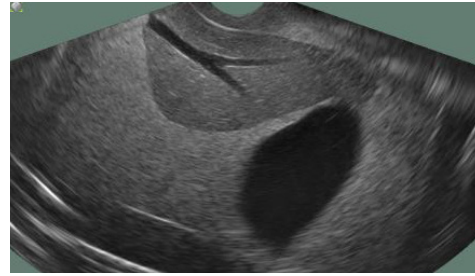
[WWW.3000buy.COM](http://WWW.3000buy.COM)

**CIRS**

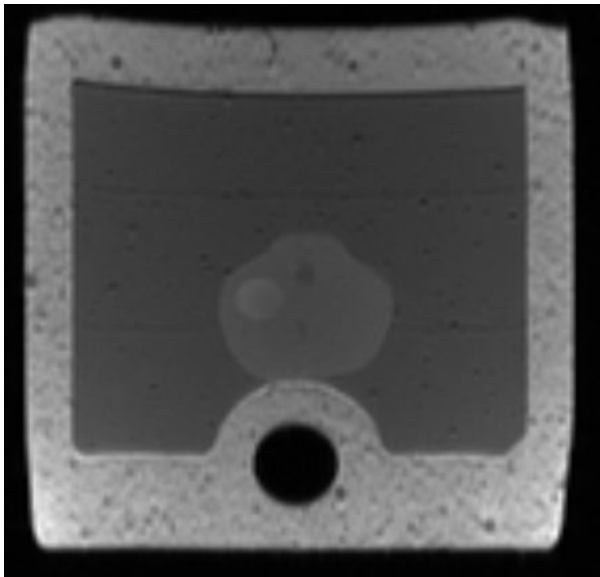
Tissue Simulation & Phantom Technology



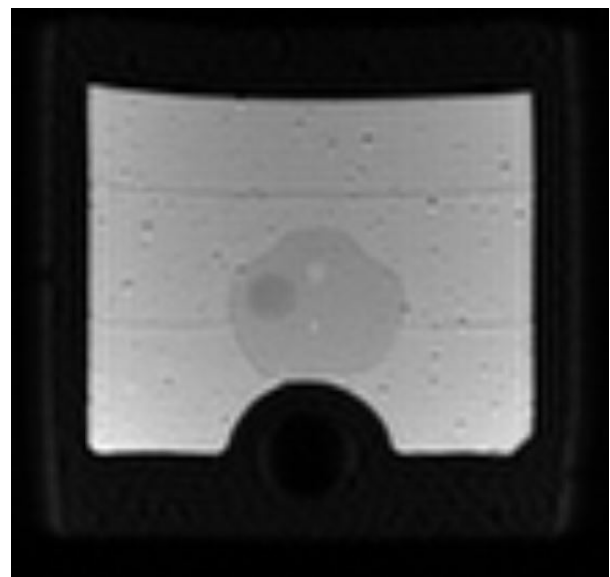
Model 070L CT Image



Model 070L US Images:  
Anterior Posterior- Top  
Transverse- Bottom



Model 070L MR T1 Image



Model 070L MR T2 Image

**SPECIFICATIONS**

**CONTAINER**

Dimensions: 12.7 x 12.7 x 12.7 cm  
Weight: 2 lbs  
Probe opening: 12 mm

**PERINEAL MEMBRANE**

Material: Z-Skin

**BACKGROUND GEL**

Standard Ultrasound background  
0dB with respect to liver reference

**URETHRA**

Dimensions: 0.7 cm Ø  
Material: Zerdine<sup>®(1)</sup>, anechoic

**SEMINAL VESICLES**

Dimensions: 7 mm Ø x 10 cm long  
Material: Zerdine, hypoechoic with respect to background

**PROSTATE**

Hypoechoic with respect to background  
45 cc Digitally Modeled with seminal vesicles and bladder  
Model 070L: Embedded lesions

**RECTAL WALL**

Material: Z-Skin

**MODEL 070 INCLUDES**

Tissue-Equivalent Prostate Phantom  
User Guide  
12-Month Warranty\*

\*Please note: once any device has been inserted into the phantom (such as biopsy needles, localization wires, etc.) the 12 month warranty will not cover claims related to material desiccation or needle tracking.

**MODEL 070 KIT OPTIONS**

070L-035: includes all parts from standard Model 070, CT DICOM Data Set<sup>(2)</sup> (Serial number specific, 1.5 mm slice) thickness @ 120 kvp

(1) US Patent # 5196343

(2) DICOM Images are provided with a free DICOM reader (Onis 2.6). If using alternate software to read the images, please notify CIRS of any special requirements for making the data compatible with your software. For instance, some programs include special checks of the DICOM header file or the DICOM directory when loading the image data set.

