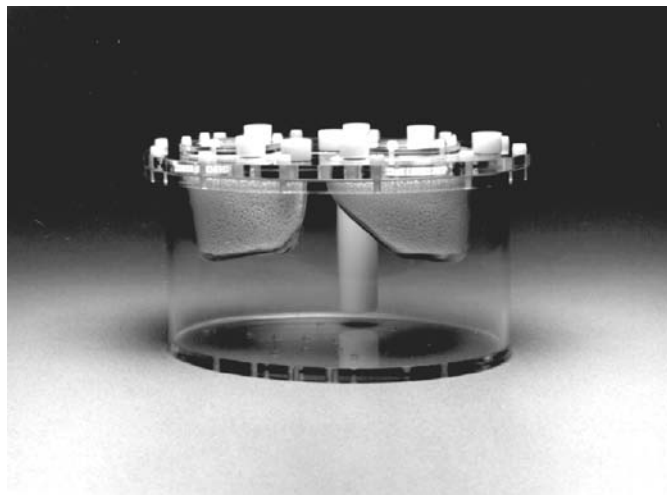
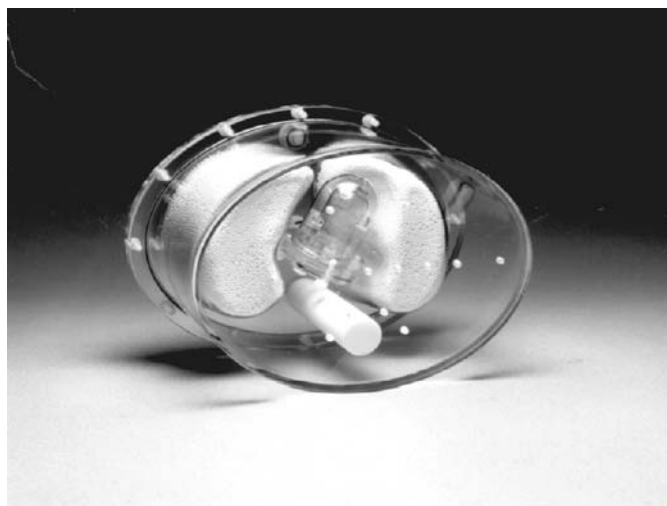


Elliptical Lung-Spine Body Phantom™



Elliptical Lung-Spine Body Phantom™



Shown with optional Cardiac Insert™

Elliptical Lung-Spine Body Phantom™

Model ECT/LUNG/P

Main Features:

- Includes spine and fillable lung inserts
- Lung inserts can be filled with Styrofoam® beads and water to simulate lung tissue density
- Optional Cardiac Insert™ (Model ECT/CAR/I) may be purchased separately
- Simulates anatomical structures and radioactivity distributions in upper torso of human
- Optional body contour rings may be purchased separately. When used with the body contour rings, the upper torso of a small (~ 30 x 22 cm) patient is simulated

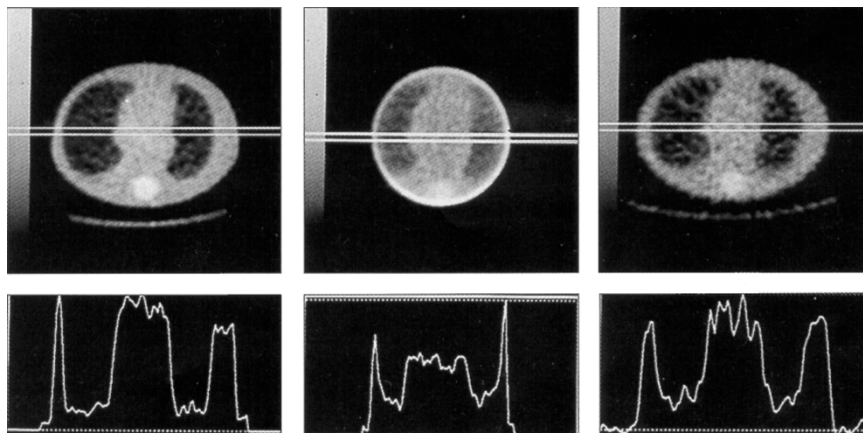
Main Applications:

- Evaluation of acquisition and reconstruction methods for cardiac and lung ECT studies
- Evaluation of non-uniform attenuation and scatter compensation methods
- Research

Specifications:

All clear material: PMMA
 Cylinder inside diameter: 21.6 cm
 Cylinder inside diameter along major axis: 30.5 cm
 Cylinder inside diameter along minor axis: 22.1 cm
 Cylinder inside height: 18.6 cm
 Cylinder wall thickness: 6.4 mm

Transmission CT



Fan Beam ($f_L=110$)cm

Fan Beam ($f_L=63$)cm

Parallel Beam

Volumes:
 Empty cylinder: ~ 9.5 liters
 Left lung (w/o Styrofoam® beads): ~ 0.9 liter
 Right lung (w/o Styrofoam® beads): ~ 1.1 liters
 Left lung (w/ Styrofoam® beads): ~ 0.36 liter
 Right lung (w/ Styrofoam® beads): ~ 0.44 liter
 Volume of cylinder with Lungs: ~ 7.4 liters



深圳为尔康科技有限公司

曾生：13632925349 QQ：274798107 电话：0755-28896837

地址：深圳市龙岗区沙平北路111号吉茂大厦608A 网址：www.medicalqc.com