

Gammex 467电子密度检测模体



深圳为尔康科技有限公司

联系人：曾祥满 手机：13632925349

QQ：274798107 电话：0755-28896837

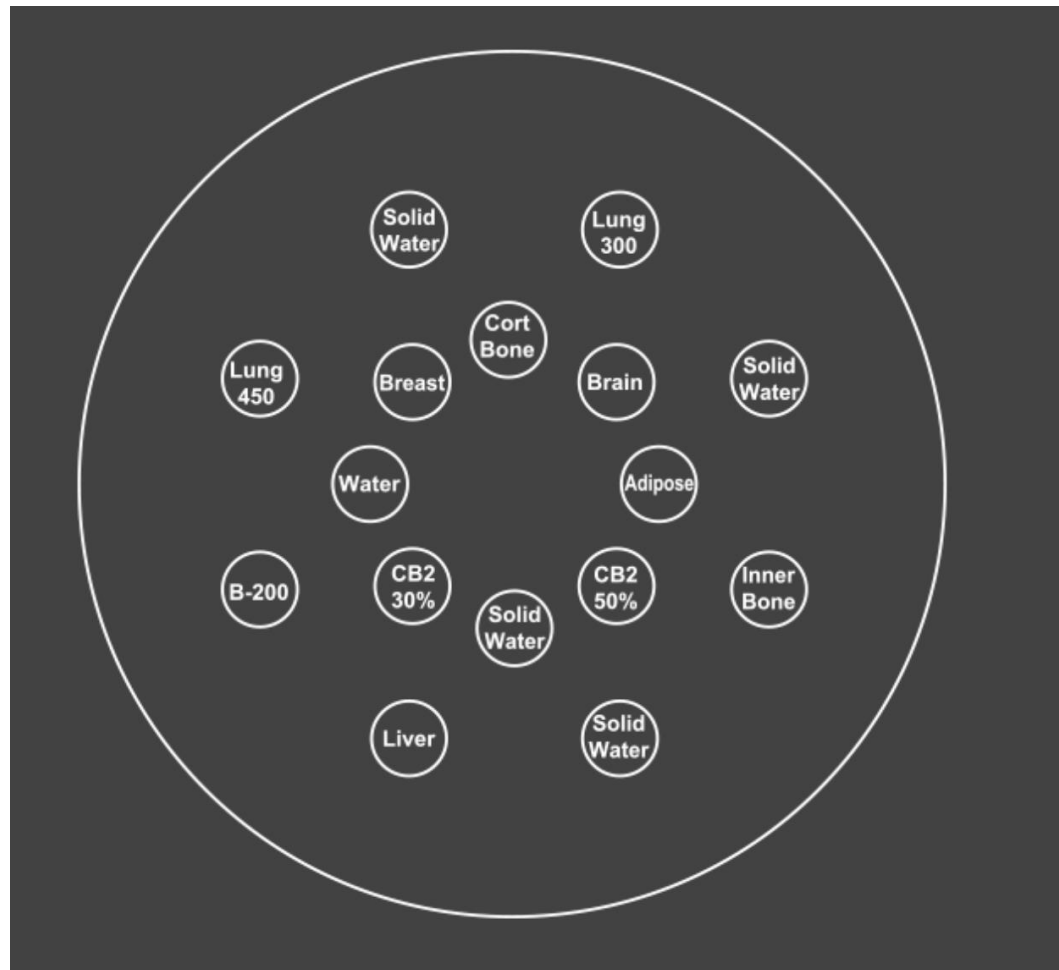
地址：深圳市龙岗区沙平北路111号608A 网址：

www.medicalQC.com 邮箱：szchina1718@163.com

Gammex 467 用来检测各组织电子密度之间的关系及所对应的CT值，提供对组织不匀质性进行精确校正。

Gammex 467符合美国AAPM标准

Gammex 467电子密度检测模体



16种不同组织密度棒，覆盖范围最广泛的电子密度值

Gammex 467电子密度检测模体-参数

序号	规格项目	投标规格和要求		
1	产品特征			
1.1	固体水材料，确保模体表现的一致性及稳定性。			
1.4	广泛的电子密度值和插棒设计符合ICRU-44和ICRP规范			
2	具体参数			
2.1	*平面尺寸	33cm直径		
2.2	深度	5cm		
2.4	*材料	固体水		
2.5	插棒组成	15个实心插棒加一个纯水插件		
2.6	重量	4.6 kg		
3	标准配置包括以下插件	数量	相对于水的电子密度	物理密度 (g/cm ³)
3.1	固体水插棒	3个	0.99	1.02
3.2	肺 (LN-300)	1个	0.28	0.30
3.3	肺 (LN-450)	1个	0.40	0.45
3.4	脂肪 (AP6)	1个	0.90	0.92
3.5	乳房	1个	0.96	0.99
3.6	脑	1个	1.05	1.05
3.7	肝 (LV1)	1个	1.07	1.08
3.8	内骨	1个	1.09	1.12
3.9	骨 (B200)	1个	1.11	1.15
3.10	骨 (CB2-30%骨矿物)	1个	1.28	1.34
3.11	骨 (CB2-50%骨矿物)	1个	1.47	1.56
3.12	皮质骨 (SB3)	1个	1.69	1.82
3.13	纯水	1个	1.00	1.00
3.14	可选配插棒	铝棒、不锈钢棒、钛棒		

CT Electron Density Phantom

Create CT-to-density tables with ease for TPS commissioning.

- Cover a wide range of electron density values
- Help ensure accurate calculations of dose distributions

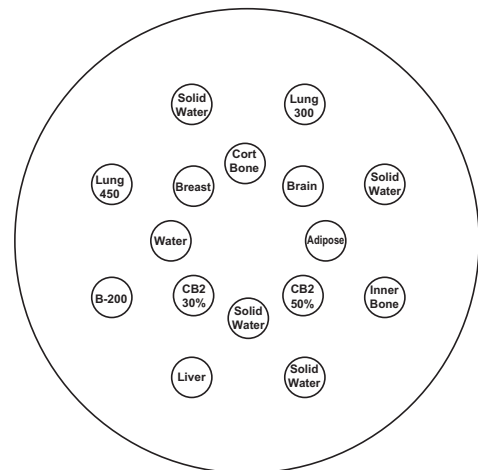


The American Association of Physicists in Medicine¹ (AAPM) and International Atomic Energy Agency² (IAEA) report that Treatment Planning Systems (TPS) convert Hounsfield Units (HUs) to electron densities for accurate calculations of dose distributions. This is commonly done using electron density reference materials that enable the verification procedure.

The only Solid Water[®] Insert Holder

The CT Electron Density Phantom consists of a zero HU Solid Water[®] disk the size of an average pelvis. Sixteen insert chambers in the disk are designed to be used with interchangeable Tissue Mimicking Materials (TMM), used for characterization. Our standard Electron Density Insert Set includes 13 different materials with a wide range of electron density values.

Use the electron density inserts to create CT-to-density tables needed for TPS commissioning. The Solid Water disk also contains eight, 1mm diameter holes spaced at 50 mm intervals around the center of the phantom to test the geometric accuracy of the CT scanner. The same Solid Water disk can be used for calcium and iodine inserts to evaluate the Dual Energy characteristics of CT scanners.



Suggested arrangement of tissue materials

深圳为尔康科技有限公司

联系人：曾祥满 手机：13632925349

QQ：274798107 电话：0755-28896837

地址：深圳市龙岗区沙平北路111号608A 网址：

www.medicalQC.com 邮箱：szchina1718@163.com

13 unique materials provide a full range of HU to electron density references

Additional materials are available



Specifications

Disk Material	Zero HU Solid Water®
Diameter:	33 cm (12.9 in)
Height:	5 cm (2 in)
Geometric Accuracy Testing:	1 mm diameter holes spaced at 50 mm intervals
Weight	
Disk and Standard Inserts:	4.6 kg (10 lbs)
With Case:	6.6 kg (14.5 lbs)

Tissue Mimicking Inserts	Electron Density Relative to Water	Physical Density (g/cm ³)
Lung (LN-300)	0.29	0.30
Lung (LN-450)	0.40	0.45
Adipose (AP6)	0.90	0.92
Breast	0.96	0.99
Zero HU Solid Water (x4)	0.99	1.02
Brain	1.05	1.05
Liver (LV1)	1.07	1.08
Inner Bone	1.09	1.12
Bone (B200)	1.11	1.15
Bone (CB2-30% Mineral)	1.28	1.34
Bone (CB2-50% Mineral)	1.47	1.56
Cortical Bone (SB3)	1.69	1.82
True Water	1.00	1.00
Optional Aluminum (1100-H14)	2.36	2.71
Optional Titanium (Grade 2)	3.79	4.51
Optional Stainless Steel (Type 316)	6.58	8.00

Tissue Mimicking Materials (TMM) can play a key role in the dose calculations for Treatment Planning Systems and for absorbed dose estimates in radiographic imaging studies. Gammex has a full line of TMM for all of your clinical and research needs.



深圳为尔康科技有限公司

联系人：曾祥满 手机：13632925349

QQ：274798107 电话：0755- 28896837

地址：深圳市龙岗区沙平北路111号608A 网址：

www.medicalQC.com 邮箱：szchina1718@163.com